



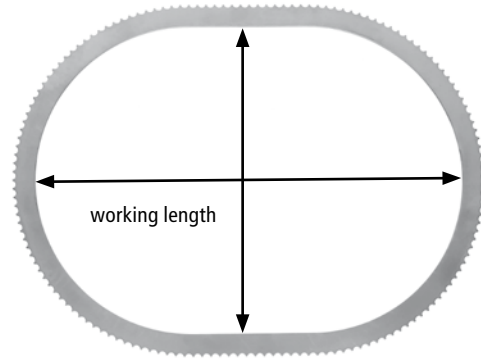
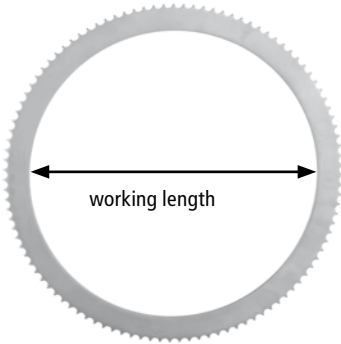
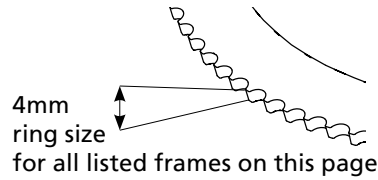
TW SURGICAL

## Ring Retractor System



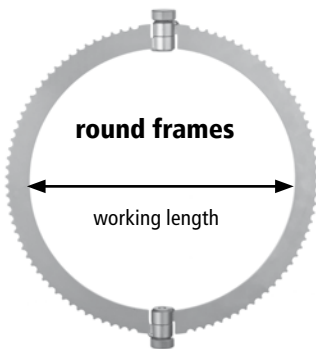


<b>Frames</b>	<b>3</b>
<b>Ratchet / Bar</b>	<b>4</b>
<b>Blades</b>	<b>5</b>

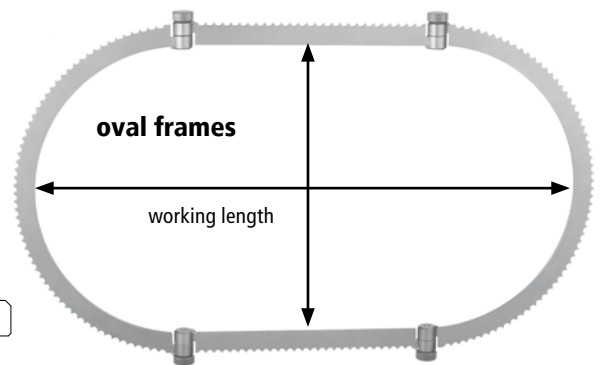
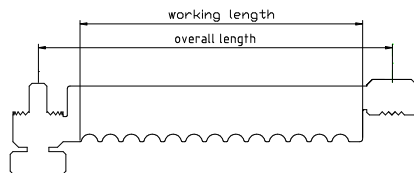


round frame		
TWS-1002/1	Ø 216mm	small
TWS-1002/2	Ø 267mm	medium
TWS-1002/3	Ø 317mm	large

oval frame		
TWS-1002/4	160x270mm	extra small
TWS-1002/5	203x311mm	small
TWS-1002/6	230x330mm	small/medium
TWS-1002/7	235x368mm	medium
TWS-1002/8	230x430mm	medium/large
TWS-1002/9	267x470mm	large



segment pieces come as pairs



	segment pairs*		oval segmented frames		
	working length	overall length	OVAL Size S	OVAL Size M	OVAL Size L
Segment S TWS-1002/10	102mm	127mm	216 x 343mm Ring S + Segment S TWS-1002/13 + TWS-1002/10	267 x 394mm Ring M + Segment S TWS-1002/14 + TWS-1002/10	317 x 444mm Ring L + Segment S TWS-1002/15 + TWS-1002/10
Segment M TWS-1002/11	152mm	177mm	216 x 393mm Ring S + Segment M TWS-1002/13 + TWS-1002/11	267 x 444mm Ring M + Segment M TWS-1002/14 + TWS-1002/11	317 x 494mm Ring L + Segment M TWS-1002/15 + TWS-1002/11
Segment L TWS-1002/12	203mm	228mm	216 x 444mm Ring S + Segment L TWS-1002/13 + TWS-1002/12	267 x 495mm Ring M + Segment L TWS-1002/14 + TWS-1002/12	317 x 545mm Ring L + Segment L TWS-1002/15 + TWS-1002/12

\*can be combined in 9 different ways, purchase segments seperately

# Ring Retractor



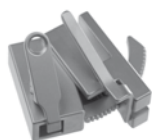
## standard ratchet

TWS-1002/16 - opening for ring size 5mm (fits best for Reuchlen products)  
TWS-1002/17 - opening for ring size 4mm (for regular/standard fit)



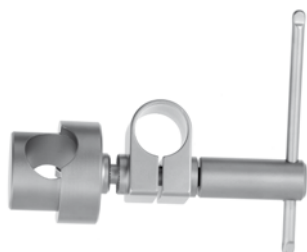
## tilt ratchet mechanism

TWS-1002/18 - opening for ring size 5mm  
TWS-1002/19 - opening for ring size 4mm



## tilt ratchet mechanism

TWS-1002/20 - opening for ring size 5mm



## post coupling

TWS-1002/21



## table post clamping device

TWS-1002/22



## extension bar

TWS-1002/23 - 305mm



## horizontal bar

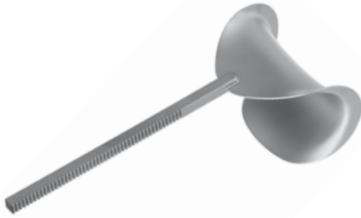
to hold the frame

TWS-1002/24 - 405mm overall length



## horizontal lex bar

TWS-1002/25 - 475mm overall length



### Balfour blade

TWS-1002/26 - 220mm, 68x85mm  
TWS-1002/27 - 220mm, 70x75mm



### Kelly blade

TWS-1002/28 - 180mm, 63x51mm  
TWS-1002/29 - 180mm, 51x51mm  
TWS-1002/30 - 180mm, 75x65mm  
TWS-1002/31 - 180mm, 76x51mm  
TWS-1002/32 - 180mm, 102x51mm  
TWS-1002/33 - 180mm, 127x51mm  
TWS-1002/34 - 180mm, 154x51mm  
TWS-1002/35 - 180mm, 190x50mm



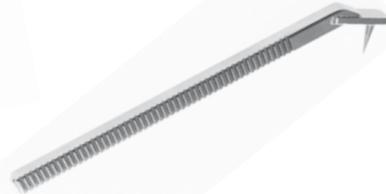
### Vein (Kelly) blade

TWS-1002/36 - 188mm, 76x21mm  
TWS-1002/37 - 180mm, 102x21mm  
TWS-1002/38 - 180mm, 127x21mm  
TWS-1002/39 - 180mm, 152x21mm  
TWS-1002/40 - 180mm, 178x21mm  
TWS-1002/41 - 180mm, 203x21mm



### malleable blade

TWS-1002/42 - 302mm, 150x38mm  
TWS-1002/43 - 302mm, 150x51mm  
TWS-1002/44 - 302mm, 150x76mm



### Gelpi hook

TWS-1002/45 - 165mm



### hook blade

TWS-1002/46 - 190mm, 25,4x25,4mm (1"x1")  
TWS-1002/47 - 190mm, 51,0x25,4mm (2"x1")  
TWS-1002/48 - 190mm, 102 x25,4mm (3"x1")



### Deaver blade

TWS-1002/49 - 215mm, 89x25mm  
TWS-1002/50 - 220mm, 127x25mm



### Harrington heartshaped blade

TWS-1002/51 - 200mm, 145x64mm

# Ring Retractor



TW SURGICAL

blades



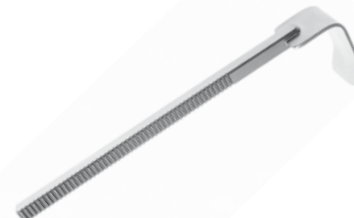
## vaginal blade I

TWS-1002/53 - 180mm, 83x25mm



## vaginal blade II

TWS-1002/54 - 214mm, 114x25mm



## Kelly blades

TWS-1002/55 - 180mm, 38x51mm  
TWS-1002/56 - 180mm, 40x25mm  
TWS-1002/57 - 180mm, 65x25mm  
TWS-1002/58 - 180mm, 122x20mm  
TWS-1002/59 - 180mm, 122x25mm



## Richardson blade

TWS-1002/60 - 180mm, 25x19mm  
TWS-1002/61 - 180mm, 51x19mm  
TWS-1002/62 - 180mm, 34x25mm



## rectal blade

TWS-1002/63 - 167mm, 75mm  
TWS-1002/64 - 167mm, 95mm



## Scoville hook blade

with cross bar  
TWS-1002/65 - 175mm, 57x26mm  
TWS-1002/66 - 175mm, 78x25mm



## Meyerding blade

TWS-1002/67 - 180mm, 62x17mm  
TWS-1002/68 - 180mm, 81x25mm  
TWS-1002/69 - 180mm, 92x50mm



## skin rake

TWS-1002/70 - 188mm, 19x17mm, 3 teeth  
TWS-1002/71 - 188mm, 8,3x19mm, 4 teeth  
TWS-1002/72 - 188mm, 8,3x25mm, 6 teeth



TW SURGICAL

## Ring Retractor Basic Parts

- Extension bar 4
- Horizontal bar 4
- Horizontal flex bar 4
- Post coupling 4
- ratchet, standard 4
- ratchet, tilt mechanism 4
- Table post clamping device 4

## Blades

- Balfour blade 5
- Deaver blade 5
- Gelpi hook 5
- Harrington heartshaped blade 5
- Hook blade 5
- Kelly blade 5, 6
- Malleable blade 5
- Meyerding blade 6
- Rectal blade 6
- Richardson blade 6
- Scoville hook blade 6
- Skin rake 6
- Vaginal blade 6
- Vein (Kelly) blade 5

## Frames

- Frame oval 3
- Frame round 3
- Frame segmented 3
- Frame segment pieces 3
- Frame vaginal 3