

## **Prone Chest Support** **Ref: TWS 2621 -1**

This foam prone chest support provides all in one support to spread pressure evenly across the patient's torso in the prone position.

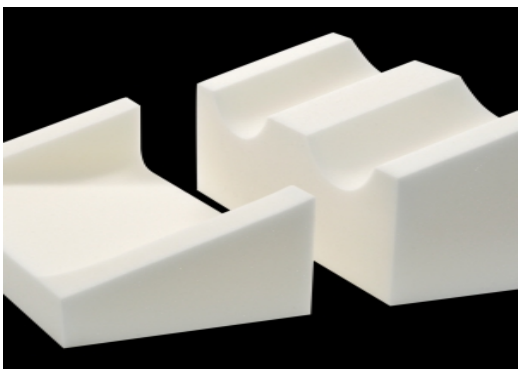
The center hole allows the abdomen to move freely.  
Shaped to help reduce pressure in the under arm and groin areas.  
Roll the foam when extra padding is needed.  
Raises the patient's chest to aid safe positioning of the head.  
Single use to aid infection control.



## **Prone Chest and Pelvic Supports** **Ref: TWS 2902-2**



Dome shaped supports to raise the patient from the operating table in the prone position.  
The height of the chest roll aids safe positioning of the patient's head and neck.  
Enables the arms to be placed in the forward position.  
Dual supports accommodate the varying statures of the patients.  
Raises the patient's chest to aid safe positioning of the head.



## **Single Use Adjustable Prone Leg Cushions** **Ref: TWS 2590-2**

The unique 2-part design is adjustable to help protect the knees, shins and ankles of your patients from pressure related injury to overcome issues with pressure sores. Knee pad to reduce pressure on the patient's knees. Shin Support raises the ankles to assist venous return and allow the feet to hang freely.

Prone Leg Cushions are sold with two sets per box.





### **Head Donuts**

**Ref: TWS-6120**

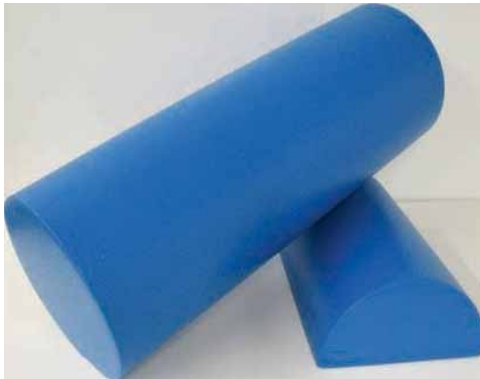
Donut 6" Dia x 1.5" H

**Ref: TWS-6140**

Donut 9" Dia x 1.5" H

**Ref: TWS-6220**

Donut 6" Dia x 1.5" H



### **Positioning Rolls**

**Ref: TWS-6230**

Roll 6" Dia x 12" L

**Ref: TWS-6235**

Roll 6" Dia x 18" L

**Ref: TWS-6240**

Roll 6" Dia x 23.5" L

**Ref: TWS-6320**

Semi-Circle 14"L x 8.5"W x 4.25"H



### **Positioning Rectangles**

**Ref: TWS-6460**

Rectangle 9" x 7" x 2"H

**Ref: TWS-6470**

Rectangle 14" x 9.25" x 2"H



TW SURGICAL



**Leg Pad  
TWS-2250**

Arthroscopic leg support pad  
Standard firm foam  
Covered with black vinyl



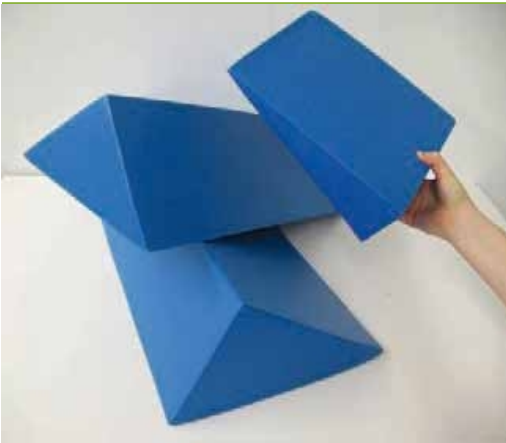
**Arm and Leg Positioner  
TWS-2850**

Arm and Leg Positioner  
Standard firm foam  
Covered with black vinyl





TW SURGICAL



### **Positioning Wedges**

**Ref: TWS-6615**

Wedge 10.5" L x 9.75"W x 2.75"H

**Ref: TWS-6620**

Wedge 11" L x 8.5"W x 3.75"H

**Ref: TWS-6635A**

Wedge 24" L x 10"W x 6.5"H

**Ref: TWS-6635B**

Wedge 24" L x 15"W x 10"H

**Ref: TWS-6645A**

Wedge 7" L x 4"W x 4"H

**Ref: TWS-6645B**

Wedge 10" L x 10"W x 10"H

**Ref: TWS-6645C**

Wedge 12" L x 6.75"W x 6.75"H

**Ref: TWS-6645D**

45o Wedge 23.5" L x 6.75"W x 6.75"H

### **Head Donut Positioners**

**Ref: TWS-8200**

Resposable head Donuts,  
Molded



**Ref: TWS-8400**

Resposable Prone Headrest Positioner  
molded



TW Surgical dry viscoelastic polymer gel pads and positioners are designed to simulate human adipose tissue composition. This will greatly reduce the risk of decubitus ulcers caused by sheer friction. Independent studies have proven the superiority of gel as compared to foam and other conventional positioning and pressure reducing products.

- > 100% Latex-Free
- > X-Ray Translucent
- > Radiolucent
- > Antimicrobial
- > Antibacterial
- > Plasticizer Free
- > Silicone Free
- > Reusable

### GEL HEAD POSITIONERS



TWS 2150	Adult head donut	8"OD x 3"ID x 1.75"H
TWS 2150-T	Adult head donut (Tall)	7.75"OD x 4"ID x 3"H
TWS 2155	Neonatal head donut	3.25"OD x 1.5"ID x .75"H
TWS 2160	Medium/pediatric head donut	5.5"OD x 2.25"ID x 1.25"H
TWS 2165	Neonatal horseshoe head donut	3.25"OD x 1.25"ID x .75"H
TWS 2170	Adult horseshoe head donut	8"OD x 3"ID x 1.75"H
TWS 2170-T	Adult horseshoe head donut (Tall)	7.75"OD x 4"ID x 3"H
TWS 2180	Head pillow w/ centering dish	9"L x 10"W x 1"H
TWS 2185	Head pillow w/ centering dish	9"L x 10"W x 1.75"H
TWS 2190	Contoured head gel pad	7"L x 7"W x 3.5"H
TWS 2191	Richards Headrest	9" x 8" x 3" w/ T notch
TWS 2192	Richards Headrest-Tall	9" x 8" x 4.5" w/ T notch
TWS 2220	Prone headrest w/ tube channels	8"OD x 2.75"ID x 3.75"H
TWS 2225	Prone gel headrest w/rigid bottom	11"L x 9"W x 6"H



## FOOT, HEEL, KNEE & STIRRUP PROTECTION

Having the proper padding, cradling and support is essential for any procedure. TW Surgical product line consists of a variety of gel pads which include gel pole pads for patient comfort and circulation.

Cane Stirrups and gel boot pads for Lift Assisted Stirrups. Utilizing foot cradles and heel lifts adds to



TWS 2280



TWS 2290



TWS 2295



TWS 2300

TWS 2320

TWS2310



TWS2326

TWS 2325



TWS2330

TWS 2335



TWS-CC-PR



TWS 4502P



TWS 4502

TWS2280	Foot, heel, and sole protector w/ Velcro	15"L x 6"W x .25"H
TWS 2290	Clamshell heel pad w/ Velcro	.5" Thick Clamshell
TWS 2295	Heel elevators / lifts (pair)	6"L x 2"W x 1.75"H
TWS 2300	Small knee crutch pad	9"L x 11"W x .375"H"
TWS 2310	Medium knee crutch pad	11"L x 17"W x .25"H
TWS 2310-5	Medium knee crutch pad (.5" version)	11"L x 17"W x .5"H
TWS 2320	Large knee crutch pad	20"L x 20"W x .5"H
TWS 2325	Universal boot stirrup pad w/ Velcro	Bell Shaped
TWS 2326	Stirrup pad w/ Velcro	Large Bell Shaped
TWS 2330	Candy cane stirrup sheaths (pair)	24"L x 2"OD
TWS 2335	Ankle stirrups straps for candy canes	12"L x 1"W x .5"H
TWS-CC-PR	Adjustable lithotomy candy canes	
TWS 4502P	Gel heel cups (pair)	6"L x 3"W x 1.5"H
TWS 4502	Gel heel cups	

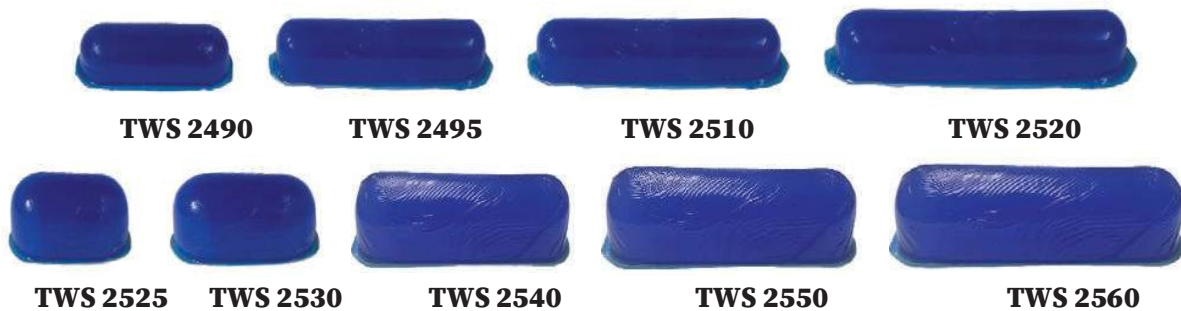
## GEL MULTI-TASK FLAT BOTTOM POSITIONER ROLLS

TW Surgical roll positioners are designed to offer versatility. Our rolls are rounded on the end to allow for axillary usage. The thermoformed skin is very forgiving yet extremely durable. These rolls are perfect for wedging, Elevating, distending, padding, and keeping the patient in proper position without fear of flattening the pad or rolling over it.



TWS 2410	Versatile roll	12"L x 4"W x 3.75"H
TWS 2415	Versatile roll (Dome Shaped)	14"L x 6"W x 3"H
TWS 2420	Versatile roll	16"L x 4"W x 3.75"H
TWS 2430	Versatile roll	20"L x 4"W x 3.75"H
TWS 2440	Versatile roll	13"L x 7"W x 5.5"H
TWS 2450	Versatile roll	16"L x 7"W x 5.5"H
TWS 2460	Versatile roll	20"L x 7"W x 5.5"H

## GEL PEDIATRIC MULTI-TASK POSITIONER



TWS2490	Pediatric versatile roll	6"L x 2"W x 2"H
TWS2495	Pediatric versatile roll	8"L x 2"W x 2"H
TWS 2510	Pediatric versatile roll	10"L x 2"W x 2"H
TWS 2520	Pediatric versatile roll	12"L x 2"W x 2"H
TWS 2525	Pediatric versatile roll	4"L x 3"W x 3"H
TWS 2530	Pediatric versatile roll	6"L x 3"W x 3"H
TWS 2540	Pediatric versatile roll	8"L x 3"W x 3"H
TWS 2550	Pediatric versatile roll	10"L x 3"W x 3"H
TWS 2560	Pediatric versatile roll	12"L x 3"W x 3"H